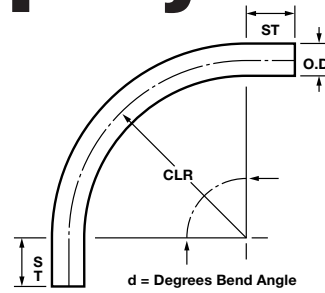


# Morris Coupling Company

## Tube Bending Capabilities

Pipe and tube bends of up to 180 degrees are readily available in aluminum, stainless, carbon steel and galvanized in the sizes listed below. Other centerline radii are available but not shown. Special shapes, "U" bends, offsets, and bifurcated bends available upon request. Morris tube bends are shipped from our Knoxville, Tennessee plant.



For PNEUMATIC SYSTEMS ... Short and Long Radius

TUBE SIZE	PIPE SIZE	OUTSIDE DIAMETER		COMMON CENTERLINE RADII (CLR) INCHES	STD. TANGENT (ST)
		INCHES	MILLIMETERS		
1"		1.0	25.4	3, 4, 6, 12	4"
	1"	1.315	33.4	3, 5	4"
1-1/4"		1.25	31.8	3, 7.25	4"
	1-1/4"	1.660	42.2	3.5, 4, 6.25	4"
1-1/2"		1.5	38.1	2.5, 6, 7.5, 9, 12, 15, 18, 24, 30, 36	4"
1-3/4"		1.75	44.5	2.5, 8, 9, 12, 15, 24, 30, 36, 48	4"
	1-1/2"	1.9	48.3	5, 6, 7.5, 9, 10, 12, 18, 24, 30, 36, 48	4"
2"		2.0	50.8	2.5, 3, 3.5, 4, 5, 6, 8, 8.5, 9, 10, 12, 15, 18, 24, 30, 36, 48	4"
2-1/8"		2.125	54.0	3, 5, 12, 24, 30, 36	4-1/4"
2-1/4"		2.25	57.2	3, 9, 12, 15, 17, 24, 30, 36	4-1/2"
	2"	2.375	60.2	6, 7.5, 10, 12, 15, 17, 24, 30, 36, 48	4"
2-1/2"		2.5	63.5	4, 6, 9, 12, 15, 17, 24, 30, 36, 48	5"
2-3/4"		2.75	69.9	2.75, 4, 17, 30, 36, 48	5-1/2"
	2-1/2"	2.875	73.0	12, 12.5, 15, 17, 24, 30, 36, 60	5"
3"		3.0	76.2	4, 4.5, 7.5, 9, 10, 12, 15, 18, 24, 30, 36, 48, 60	6"
3-1/4"		3.25	82.6	17, 30, 36	6-1/2"
3-1/2"	3"	3.5	88.9	3.5, 4.5, 6, 8.75, 12, 15, 16, 18, 24, 30, 36, 48	7" (6" - pipe)
3-3/4"		3.75	95.3	17, 24, 32, 36	7-1/2"
4"	3-1/2"	4.0	101.6	4, 5, 6, 7.75, 10, 12, 16, 18, 20, 24, 30, 32, 36, 48, 60	8" (7" - pipe)
4-1/4"		4.25	107.9	16, 30, 36, 48, 60	8-1/2"
4-1/2"	4"	4.5	114.3	6, 9, 12, 16, 18, 20, 24, 30, 32, 36, 48, 60	9" (8" - pipe)
4-3/4"		4.75	120.7	36	9-1/2"
5"		5.0	127.0	5.5, 7.5, 12.5, 17, 22, 24, 30, 36, 42, 48, 60	10"
	5"	5.563	141.3	15, 20, 24, 30, 36, 42, 48, 60, 72	10"
5-1/2"		5.5	139.7	30, 36	11"
6"		6.0	152.4	9, 15, 18, 24, 30, 36, 42, 48, 60, 72	12"
	6"	6.625	168.2	18, 24, 30, 36, 42, 48, 60, 72	12"
8"		8.0	203.2	12, 20, 32, 48, 60, 72	16"
	8"	8.625	219.1	24, 32, 40, 42, 48, 60, 72	16"
	10"	10.75	273.1	40, 48, 50	20"

Capabilities subject to change without notice.

**ORDER BENDS:** By O.D., wall thickness, alloy, degree of bend, centerline radius and tangent.

**WALL THICKNESS:** 16 ga. (.063), 14 ga. (.083), and 11 ga. (.120) in tubing.

Schedules 5, 10 and 40 pipe. Other wall thicknesses on request.

**MATERIALS:** Aluminum is 6063-T1 extruded. Stainless is T304 ASTM A312 for pipe and T304 ASTM A249 for tubing.

Carbon steel ASTM A53 for pipe; A513 for tubing. Galvanized A53 for galvanized-coated pipe and A513 for galvanized-coated tubing. Aluminized tubing is ASTM A787.

### STOCK TUBE BENDS

Morris maintains an extensive inventory of tube bends available for 24-hour shipment. Most popular bend sizes are stocked in carbon steel, aluminum and stainless materials.



2240 W. 15th St. • Erie, PA 16505 • 814-459-1741

Phone: 1-800/426-1579 • Fax: 1-800/545-1399

www.morriscoupling.com

e-mail: sales@morriscoupling.com

Call MORRIS COUPLING for all your pneumatic conveying line needs.



## PIPE DIMENSIONS AND WEIGHTS

PIPE SIZE	O.D. IN INCHES	PIPE SCHEDULES																						
		5s	5	10s	10	20	+	30	40s & STD.	40	⊕	60	80s & E.H.	80	100	120	140	160	DBL. E.H.					
1/8	.405		.035 .1383	.049 .1863	.049 .1863				.068 .2447	.068 .2447			.095 .3145	.095 .3145	<b>BLACK</b> WALL THICKNESS IN INCHES  <b>RED</b> STEEL WEIGHT PER FOOT IN POUNDS  <b>BLUE</b> ALUMINUM WEIGHT PER FOOT IN POUNDS									
1/4	.540		.049 .2570	.065 .3297	.065 .3297				.088 .4248	.088 .4248			.119 .5351	.119 .5351										
3/8	.675		.049 .3276	.065 .4235	.065 .4235				.091 .5676	.091 .5676			.126 .7388	.126 .7388										
1/2	.840	.065 .5383	.065 .3830	.083 .6710	.083 .6710				.109 .8510	.109 .8510			.147 .1088	.147 .1088					.187 .4510	.294 .714				
3/4	1.050	.065 .6838	.065 .2370	.083 .8572	.083 .8572				.113 .1131	.113 .1131			.154 .1474	.154 .1474					.218 .1937	.308 .2441				
1	1.315	.065 .8678	.065 .3000	.109 .1404	.109 .1404				.133 .1679	.133 .1679			.179 .2172	.179 .2172					.250 .2844	.358 .3659				
1 1/4	1.660	.065 .1107	.065 .3830	.109 .1806	.109 .1806				.140 .2273	.140 .2273			.191 .2997	.191 .2997					.250 .3765	.382 .5214				
1 1/2	1.900	.065 .1274	.065 .4410	.109 .2085	.109 .2085				.145 .2718	.145 .2718			.200 .3631	.200 .3631					.281 .4859	.408 .6408				
2	2.375	.065 .1604	.065 .5550	.109 .2638	.109 .2638				.154 .3653	.154 .3653			.218 .5022	.218 .5022					.344 .7462	.436 .9029				
2 1/2	2.875	.083 .2475	.083 .8560	.120 .3531	.120 .3531				.203 .5793	.203 .5793			.276 .7661	.276 .7661					.375 .1001	.552 .1370				
3	3.500	.083 .3029	.083 .1048	.120 .4332	.120 .4332				.216 .7576	.216 .7576			.300 .1025	.300 .1025					.438 .1432	.600 .1858				
3 1/2	4.000	.083 .3472	.083 .1201	.120 .4937	.120 .4937				.226 .9109	.226 .9109			.318 .1251	.318 .1251					.636 .2285					
4	4.500	.083 .3915	.083 .1354	.120 .5613	.120 .5613				.237 .1079	.237 .1079			.337 .1498	.337 .1498		.438 .1900		.531 .2251	.674 .2754					
4 1/2	5.000								.247 .1254				.355 .1761											
5	5.563	.109 .6349	.109 .2196	.134 .7770	.134 .7770				.258 .1462	.258 .1462			.375 .2078	.375 .2078		.500 .9353		.625 .3296	.750 .3855					
6	6.625	.109 .7585	.109 .2624	.134 .9290	.134 .9290				.280 .1897	.280 .1897			.432 .2857	.432 .2857		.562 .3639		.719 .4335	.864 .5316					
7	7.625								.301 .2354				.500 .3804						.875 .6308					
8	8.625	.109 .9914	.109 .3429	.148 .1340	.148 .1340	.250 .2236	.175 .5463	.277 .8543	.322 .2855	.322 .2855		.406 .1233	.500 .4339	.500 .4339	.594 .5095	.719 .6071	.812 .6776	.906 .7479	.875 .7242					
9	9.625								.342 .3391				.500 .4873											
10	10.75	.134 .1519	.134 .5256	.165 .1865	.165 .1870	.250 .2804	.279 .1079	.307 .1134	.365 .4048	.365 .4048		.500 .1893	.500 .5474	.594 .6443	.719 .7703	.844 .8229	1.000 .1041	1.125 .1156	1.000 .1041					
11	11.75								.375 .4556				.500 .6008											
12	12.75	.156 .2107	.165 .2218	.180 .2416	.180 .2416	.250 .3338	.375 .1714	.330 .1514	.375 .4377	.375 .4377	.500 .2263	.562 .2531	.500 .6542	.500 .8863	.688 .107.3	.844 .1000	1.000 .125.5	1.125 .136.7	1.000 .125.5					
14	14.00	.156 .2307		.188 .27.73	.188 .36.71	.250 .45.61		.312 .45.61	.375 .54.57	.375 .54.57		.438 .63.44	.500 .85.05	.594 .72.09	.688 .106.1	.844 .130.9	1.000 .150.8	1.125 .170.2	1.000 .189.1					
16	16.00	.165 .27.90		.188 .31.75	.250 .42.05	.312 .52.27		.375 .62.58	.375 .62.58	.500 .82.77		.656 .107.5	.500 .82.77	.500 .136.6	.844 .164.8	1.031 .192.4	1.219 .223.6	1.438 .245.3	1.594 .245.3					
18	18.00	.165 .31.43		.188 .35.76	.250 .47.39	.312 .58.94		.375 .82.15	.375 .70.59	.562 .104.7		.750 .138.2	.500 .93.45	.688 .170.9	.938 .208.0	1.156 .244.1	1.375 .274.2	1.562 .308.5	1.781 .308.5					
20	20.00	.188 .39.78		.218 .46.05	.250 .52.73	.375 .78.60		.500 .104.1	.375 .78.60	.594 .123.1		.812 .166.4	.500 .104.1	.500 .208.9	1.031 .256.1	1.281 .296.4	1.500 .341.1	1.750 .379.2	1.969 .379.2					

## TUBING DIMENSIONS

TUBE GAUGE	18	17	16	15	14	13	12	11	1/8	10	9	5/32	8	7	3/16	6	5	4	1/4	2
WALL THICK.	.049	.058	.065	.075	.083	.095	.109	.120	.125	.134	.148	.156	.165	.180	.188	.203	.220	.238	.250	.280



2240 W. 15th St. • Erie, PA 16505  
 Phone: 814-459-1741 • Toll Free: 1-800/426-1579 • Fax: 1-800/545-1399  
[www.morriscoupling.com](http://www.morriscoupling.com) • e-mail: [sales@morriscoupling.com](mailto:sales@morriscoupling.com)



Morris Coupling offers glass bends for applications requiring extended wear life beyond that experienced with standard stainless steel bends. Ideal for transmitting highly abrasive plastic pellets and similar abrasive materials. Morris supplied glass bends are designed to match the inside diameter of 16 Ga. tubing eliminating the step that exists with metric dimensioned products. Bends are available in 90° and 45° with a radius of either 9 or 18 inches. Morris also provides couplings with stepped gaskets to connect bends to tubing. Glass bends are stocked in our Knoxville facility.



### Glass Bend Information

Part Number	Tubing Size Inches	Inside diameter Inches	Angle Degrees	Center Line Radius Inches	Outside Diameter Inches	Nominal Wall Thickness Inches	Tangent Length Inches	Weight LB.
GL2266409	2"	1.87	90°	9	2.26	.197	4	2.26
GL2266209	"	"	45°	9	2.26	.197	4	1.54
GL2266418	"	"	90°	18	2.26	.197	4	3.72
GL2266218	"	"	45°	18	2.26	.197	4	2.26
GL2766409	2½"	2.37	90°	9	2.76	.197	5	3.08
GL2766209	"	"	45°	9	2.76	.197	5	2.18
GL2766418	"	"	90°	18	2.76	.197	5	4.88
GL2766218	"	"	45°	18	2.76	.197	5	3.08
GL3266409	3"	2.87	90°	9	3.26	.197	6	3.98
GL3266209	"	"	45°	9	3.26	.197	6	2.90
GL3266418	"	"	90°	18	3.26	.197	6	6.14
GL3264218	"	"	45°	18	3.26	.197	6	3.98

All bends incorporate a grounding strip.

Morris provides stepped couplings to accommodate the outside diameter difference between the glass bend and tubing.

In addition to glass bends, Morris also offers a complete line of wear resistant bends including ceramic lined, ceramic backed and various wear back options.

## Straight Sections of Glass

In addition to bends and couplings Morris offer 3 foot long straight sections of glass tubing. These short sections combined with the bends provide additional wear resistance as abrasive materials exit the bend. Straight sections of glass are stocked in our Knoxville facility. These are available in 2", 2½" and 3". Refer to the chart below for part numbers and dimensional information.

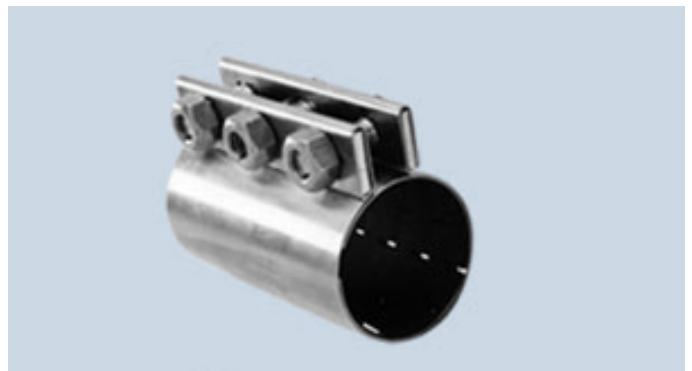
Part Number	Tubing Size Inches	Inside diameter Inches	Outside Diameter Inches	Nominal Wall Thickness Inches
GL2266-03	2"	1.87	2.26	.197
GL2766-03	2½"	2.37	2.76	.197
GL3266-03	3"	2.87	3.26	.197



## Couplings for Glass Bends

Glass Bend to Tubing			Glass to Glass		
Part Number	Tubing Size Inches	Description	Part Number	Tubing Size Inches	Description
2302263B20200GL	2"	2.26X2-3C-ODGL	0102263B2GL	2"	2.26-3C-ODGL
2302763B20250GL	2½"	2.76X2.5-3-ODGL	0102763B2GL	2½"	2.76-3C-ODGL
2303263B20300GL	3"	3.26X3-3C-ODGL	0103263B2GL	3"	3.26-3C-ODGL

The couplings described above are 3 bolt with black gaskets. Other gaskets are available upon request. Please contact the sales department in Erie if other gasket materials are required.





## TUBES et TUYAUX

## TUBING & PIPING

### ► MATÉRIAUX / MATERIALS

AL = Aluminium/Aluminum

CS = Acier au carbone/Carbon Steel

►►V = Verre/Glass (NOUVEAU/NEW)

GS = Acier galvanisé/Galvanized Steel

SS = Acier inoxydable/Stainless Steel

### ► ÉPAISSEUR / THICKNESS

TUBE

= 11GA (.120") - 14GA (.083") - 16GA (.065")

TUYAU/PIPE = SCH5, SCH10, SCH40 (Autres disponibles/Others available)

(Acier au carbone/Carbon Steel : SCH40 seulement/only)

TUBES	Aluminium / Aluminum		(11GA - .120")	(16GA - .065)	
DROITS STRAIGHT	Diam. Ext. (")	Longueur min.	Numéro de Catalogue	Numéro de Catalogue	
	Outside Diam. (")	Min. Length	Catalog Number	Catalog Number	
	1.500 ~ 1-1/2	20' - 0"	TUBAL151-20	TUBAL156-20 ◀	
	2.000 ~ 2	20' - 0"	TUBAL201-20	TUBAL206-20 ◀	
	2.500 ~ 2-1/2	20' - 0"	TUBAL251-20	TUBAL256-20 ◀	
	3.000 ~ 3	20' - 0"	TUBAL301-20 ◀	TUBAL306-20 ◀	
	4.000 ~ 4	20' - 0"	TUBAL401-20 ◀	N/A	
	Acier inox. / Stainless Steel		(11GA - .120")	(16GA - .065)	
	1.500 ~ 1-1/2	20' - 0"	TUBSS151-20	TUBSS156-20	
	2.000 ~ 2	20' - 0"	TUBSS201-20	TUBSS206-20 ◀	
	2.500 ~ 2-1/2	20' - 0"	TUBSS251-20	TUBSS256-20 ◀	
	3.000 ~ 3	20' - 0"	TUBSS301-20	TUBSS306-20 ◀	
4.000 ~ 4	20' - 0"	TUBSS401-20	TUBSS406-20		
TUYAUX / PIPES	Aluminium / Aluminum		(CED10) / (SCH10)		
DROITS STRAIGHT	Diam. nominal (")	Longueur min.	Numéro de Cat.		
	Nominal diam. (")	Min. Length	Catalog Number		
	2 (2.375 OD)	20' - 0"	PIPAL230-20		
	2-1/2 (2.875 OD)	20' - 0"	PIPAL280-20		
	3 (3.500 OD)	20' - 0"	PIPAL350-20		
	4 (4.500 OD)	20' - 0"	PIPAL450-20		
	Acier inox. / Stainless Steel		(CED10) / (SCH10)		
	2 (2.375 OD)	20' - 0"	PIPSS230-20		
	2-1/2 (2.875 OD)	20' - 0"	PIPSS280-20		
	3 (3.500 OD)	20' - 0"	PIPSS350-20		
	4 (4.500 OD)	20' - 0"	PIPSS450-20		
	TUBES EN VERRE/ GLASS TUBES		(.197")		
DROITS STRAIGHT	Diam. Ext. (")	Longueur	Numéro de Catalogue		
	Outside Diam. (")	Length	Catalog Number		
	2.000	3' - 0"	GL2266-03		
	2.500	3' - 0"	GL2766-03		
	3.000	3' - 0"	GL3266-03		

(Autres diamètres disponibles sur demande (aluminium & acier) / Other sizes available on request (aluminum & steel))

## ATTACHES DE TUBES ET TUYAUX / TUBING & PIPING CLAMPS

### ► MATÉRIAUX / MATERIALS

EG = Électro galvanisé/Electro galvanized

PG = Prégalvanisé/Pregalvanized

SS = Acier inox./Stainless Steel (Type 304)

Attaches (Vis et écrou incl.)	Tube	Tuyau	Diam. Ext. (")	Diam. Ext. (mm)	Qté min.	Numéro de Catalogue
Clamps (Screw & nut incl.)	Tube	Pipe	O.D. (")	O.D. (mm)	Min. Qty	Catalog Number
	1-1/2"		1,41 ~ 1,53	36,0 ~ 39,0	10	CLPPG150-10 ◀
	2"		1,93 ~ 2,04	49,0 ~ 52,0	10	CLPPG200-10 ◀
		2"	2,33 ~ 2,45	60,0 ~ 62,5	10	CLPPG238-10
	2-1/2"		2,46 ~ 2,57	62,5 ~ 65,5	10	CLPPG250-10 ◀
		2-1/2"	2,88 ~ 2,94	73,0 ~ 75,0	10	CLPPG288-10
	3"		2,95 ~ 3,06	75,0 ~ 78,0	10	CLPPG300-10 ◀
	3-1/2"	3"	3,36 ~ 3,50	85,5 ~ 89,0	10	CLPPG350-10
	4"		3,80 ~ 4,00	96,5 ~ 101,5	10	CLPPG400-10 ◀
4-1/2"	4"	4,25 ~ 4,50	108 ~ 114	10	CLPPG450-10	

PREGALVANIZED CHANNEL		PRE-GALV. HANGER ROD (Threaded)		JUNIOR TOP BEAM C-CLAMP	
	<b>CANIVEAU PRÉ-GALVANISÉ</b> 1-5/8" x 1-5/8"		<b>TIGE de SUSPENSION en ZINC et FILETÉE</b> 3/8"		<b>ATTACHE de POUTRE en 'C' ÉLECTRO GALV.</b>
	Épaisseur/Thickness : 12GA		Max. : 610 lbs 16 NCT		Max. : 350 lbs
Numéro de Cat.	Longueur minimum	Numéro de Cat.	Longueur minimum	Numéro de Cat.	Tige [A]
Catalog Number	Minimum Length	Catalog Number	Minimum Length	Catalog Number	Rod [A]
TRKPG163-10	10'-0"	RODPG038-10	10'-0"	M777-3/8EG	3/8"



## COUDES

## BENDS

### ► MATÉRIAUX / MATERIALS

A = Aluminium/Aluminum

C = Acier au carbone/Carbon Steel

►►V = Verre/Glass (NOUVEAU/NEW)

G = Acier galvanisé/Galvanized Steel

S = Acier inoxydable/Stainless Steel

### ► ÉPAISSEUR / THICKNESS

TUBE = 11GA (.120") - 14GA (.083") - 16GA (.065")

TUYAU/PIPE = SCH5, SCH10, SCH40 (Autres disponibles/Others available)

(Acier au carbone/Carbon Steel : SCH40 seulement/only)

Tube	Tuyau Pipe	Diam. Ext. O.D. "	CLR = Rayon de Courbure Commun (") CLR = Common Centerline Radii (")	ST = Tangente ST = Tangent	SPÉCIFICATIONS SPECIFICATIONS
1-1/2"		1.500	2.5, 6, 7.5, 9, 12, 15, 18, 24, 30, 36	4"	
	1-1/2"	1.900	5, 6, 7.5, 9, 10, 12, 18, 24, 30, 36, 48	4"	
2"		2.000	2.5, 5, 6, 8, 8.5, 9, 10, 12, 15, 18, 24, 30, 36, 48	4"	
	2"	2.375	6, 7.5, 9, 10, 12, 15, 17, 24, 30, 36, 48	4"	
2-1/2"		2.500	4, 6, 9, 12, 15, 17, 24, 30, 36, 48	5"	
	2-1/2"	2.875	12, 12.5, 15, 17, 24, 30, 36, 60	5"	
3"		3.000	4.5, 7.5, 9, 12, 15, 18, 24, 30, 36, 48, 60	6"	
3-1/2"	3"	3.500	3.5, 6, 8.75, 9, 12, 15, 16, 18, 24, 30, 36, 48	7" (6" pipe)	
4"	3-1/2"	4.000	6, 10, 12, 16, 18, 20, 24, 30, 32, 36, 48, 60	8" (7" pipe)	
4-1/2"	4"	4.500	6, 9, 12, 16, 18, 20, 24, 30, 32, 36, 48, 60	9" (8" pipe)	

(D'autres diamètres et rayons de courbure sont disponibles mais non montrés. / Other sizes and centerline radii are available but not shown.)

TUBES 30°	Aluminium / Aluminum		(11GA - .120")		(16GA - .065)	
	Diam. Ext. (")	Courbure - CLR (")	Numéro de Cat.	Prix/unité	Numéro de Cat.	Prix/unité
	Outside Diam. (")	Radius - CLR (")	Catalog Number	Price/unit	Catalog Number	Price/unit
	1.500 ~ 1-1/2	12	BNDAL151312	☒\$	BNDAL156312	☒\$
	2.000 ~ 2	24	BNDAL201324	☒\$	BNDAL206324 ◀	☒\$
	2.500 ~ 2-1/2	24	BNDAL251324	☒\$	BNDAL256324 ◀	☒\$
	3.000 ~ 3	36	BNDAL301336	☒\$	BNDAL306336	☒\$
	4.000 ~ 4	36	BNDAL401336	☒\$	BNDAL406336	☒\$
	<b>Acier inoxydable / Stainless Steel</b>		<b>(11GA - .120")</b>		<b>(16GA - .065)</b>	
	1.500 ~ 1-1/2	12	BNDSS151312	☒\$	BNDSS156312	☒\$
	2.000 ~ 2	24	BNDSS201324	☒\$	BNDSS206324	☒\$
	2.500 ~ 2-1/2	24	BNDSS251324	☒\$	BNDSS256324	☒\$
	3.000 ~ 3	36	BNDSS301336	☒\$	BNDSS306336	☒\$
	4.000 ~ 4	36	BNDSS401336	☒\$	BNDSS406336	☒\$

TUBES 45°	Aluminium / Aluminum		(11GA - .120")		(16GA - .065)		
	Diam. Ext. (")	Courbure - CLR (")	Numéro de Cat.	Prix/unité	Numéro de Cat.	Prix/unité	
	Outside Diam. (")	Radius - CLR (")	Catalog Number	Price/unit	Catalog Number	Price/unit	
	1.500 ~ 1-1/2	12	BNDAL151212	☒\$	BNDAL156212	☒\$	
	2.000 ~ 2	24	BNDAL201224	☒\$	BNDAL206224 ◀	☒\$	
	2.500 ~ 2-1/2	24	BNDAL251224	☒\$	BNDAL256224 ◀	☒\$	
	3.000 ~ 3	36	BNDAL301236 ◀	☒\$	BNDAL306236 ◀	☒\$	
	4.000 ~ 4	36	BNDAL401236 ◀	☒\$	BNDAL406236	☒\$	
	<b>Acier inoxydable / Stainless Steel</b>		<b>(11GA - .120")</b>		<b>(16GA - .065)</b>		
	1.500 ~ 1-1/2	12	BNDSS151212	☒\$	BNDSS156212	☒\$	
	2.000 ~ 2	24	BNDSS201224	☒\$	BNDSS206224	☒\$	
	2.500 ~ 2-1/2	24	BNDSS251224	☒\$	BNDSS256224	☒\$	
	3.000 ~ 3	36	BNDSS301236	☒\$	BNDSS306236	☒\$	
	4.000 ~ 4	36	BNDSS401236	☒\$	BNDSS406236	☒\$	
	<b>Verre / Glass</b>		<b>(11GA - .120")</b>		<b>(16GA - .065)</b>		
	<b>NOUVEAU PRODUIT POUR ABRASION</b>	2.000 ~ 2	9	N/D - N/A		BNDGL2266209	
		2.000 ~ 2	18	N/D - N/A		BNDGL2266218	
2.500 ~ 2-1/2		9	N/D - N/A		BNDGL2766209		
2.500 ~ 2-1/2		18	N/D - N/A		BNDGL2766209		
3.000 ~ 3		9	N/D - N/A		BNDGL3266209		
3.000 ~ 3		18	N/D - N/A		BNDGL3266209		



**COUDES** (suite)

(continued) **BENDS**

TUBES	Aluminium / Aluminum		(11GA - .120")		(16GA - .065)		
	Diam. Ext. (")	Courbure - CLR (")	Numéro de Cat.	Prix/unité	Numéro de Cat.	Prix/unité	
90°	Outside Diam. (")	Radius - CLR (")	Catalog Number	Price/unit	Catalog Number	Price/unit	
	1.500 ~ 1-1/2	6	BNDAL151406	¤\$	BNDAL156406	¤\$	
	1.500 ~ 1-1/2	12	BNDAL151412	¤\$	BNDAL156412	¤\$	
	2.000 ~ 2	6	BNDAL201406	¤\$	BNDAL206406 ◀	¤\$	
	2.000 ~ 2	24	BNDAL201424	¤\$	BNDAL206424 ◀	¤\$	
	2.500 ~ 2-1/2	6	N/A	N/A	BNDAL256406 ◀	¤\$	
	2.500 ~ 2-1/2	24	BNDAL251424	¤\$	BNDAL256424 ◀	¤\$	
	3.000 ~ 3	9	BNDAL301409	¤\$	BNDAL306409 ◀	¤\$	
	3.000 ~ 3	36	BNDAL301436 ◀	¤\$	BNDAL306436 ◀	¤\$	
	4.000 ~ 4	12	BNDAL401412	¤\$	BNDAL406412 ◀	¤\$	
	4.000 ~ 4	36	BNDAL401436	¤\$	BNDAL406436	¤\$	
				(11GA - .120")		(16GA - .065)	
		1.500 ~ 1-1/2	6	BNDSS151406	¤\$	BNDSS156406	¤\$
		1.500 ~ 1-1/2	12	BNDSS151412	¤\$	BNDSS156412	¤\$
		2.000 ~ 2	24	BNDSS201424	¤\$	BNDSS206424	¤\$
	2.500 ~ 2-1/2	24	BNDSS251424	¤\$	BNDSS256424	¤\$	
	3.000 ~ 3	36	BNDSS301436	¤\$	BNDSS306436	¤\$	
	4.000 ~ 4	36	BNDSS401436	¤\$	BNDSS406436	¤\$	
			(11GA - .120")		(16GA - .065)		
NOUVEAU PRODUIT POUR ABRASION	Verre / Glass						
	2.000 ~ 2	9	N/D - N/A		BNDGL2266409		
	2.000 ~ 2	18	N/D - N/A		BNDGL2266418		
	2.500 ~ 2-1/2	9	N/D - N/A		BNDGL2766409		
	2.500 ~ 2-1/2	18	N/D - N/A		BNDGL2766409		
	3.000 ~ 3	9	N/D - N/A		BNDGL3266409		
3.000 ~ 3		N/D - N/A		BNDGL3266409			

(Autres courbures et diamètres disponibles sur demande / Other radius & sizes available on request)

**EMBRANCHEMENTS**

**BRANCHES**

▶ **MATÉRIAUX / MATERIALS**

A = Aluminium/Aluminum

C = Acier au carbone/Carbon Steel

G = Acier galvanisé/Galvanized Steel

S = Acier inoxydable/Stainless Steel

▶ **ÉPAISSEUR / THICKNESS**

TUBE = 11GA (.120") - 14GA (.083") - 16GA (.065")

TUYAU/PIPE = SCH5, SCH10, SCH40 (Autres disponibles/Others available)

(Acier au carbone/Carbon Steel : SCH40 seulement/only)

TUBES	Aluminium / Aluminum		(11GA - .120")		(16GA - .065)	
	Diam. Ext. (")	Dimensions	Numéro de Cat.	Prix/unité	Numéro de Cat.	Prix/unité
TÉ	Outside Diam. (")	Dimensions	Catalog Number	Price/unit	Catalog Number	Price/unit
	1.500 ~ 1-1/2	8" x 16"	TEEAL151-X3	¤\$	TEEAL156-X3	¤\$
	2.000 ~ 2	8" x 16"	TEEAL201-X3	¤\$	TEEAL206-X3 ◀	¤\$
	2.500 ~ 2-1/2	8" x 16"	TEEAL251-X3	¤\$	TEEAL256-X3 ◀	¤\$
	3.000 ~ 3	8" x 16"	TEEAL301-X3	¤\$	TEEAL306-X3 ◀	¤\$
	4.000 ~ 4	8" x 16"	TEEAL401-X3	¤\$	TEEAL406-X3	¤\$

(Autres diamètres disponibles sur demande / Other sizes available on request)

TUBES	Aluminium / Aluminum		(11GA - .120")		(16GA - .065)		
	Diam. Ext. (")	Angle disponibles	Numéro de Cat.	Prix/unité	Numéro de Cat.	Prix/unité	
LATÉRAL	Outside Diam. (")	Available angles	Catalog Number	Price/unit	Catalog Number	Price/unit	
	1.500 ~ 1-1/2	15°, 30°, [45°], 60°	WYEAL1512LY	¤\$	WYEAL1562LY	¤\$	
	2.000 ~ 2	15°, 30°, [45°], 60°	WYEAL2012LY	¤\$	WYEAL2062LY	¤\$	
	2.500 ~ 2-1/2	15°, 30°, [45°], 60°	WYEAL2512LY	¤\$	WYEAL2562LY	¤\$	
	3.000 ~ 3	15°, 30°, [45°], 60°	WYEAL3012LY	¤\$	WYEAL3062LY	¤\$	
	4.000 ~ 4	15°, 30°, [45°], 60°	WYEAL4012LY	¤\$	WYEAL4062LY	¤\$	
				(11GA - .120")		(16GA - .065)	
		1.500 ~ 1-1/2	15°, 30°, [45°], 60°	WYESS1512LY	¤\$	WYESS1562LY	¤\$
		2.000 ~ 2	15°, 30°, [45°], 60°	WYESS2012LY	¤\$	WYESS2062LY ◀	¤\$
		2.500 ~ 2-1/2	15°, 30°, [45°], 60°	WYESS2512LY	¤\$	WYESS2562LY ◀	¤\$
		3.000 ~ 3	15°, 30°, [45°], 60°	WYESS3012LY	¤\$	WYESS3062LY ◀	¤\$
	4.000 ~ 4	15°, 30°, [45°], 60°	WYESS4012LY	¤\$	WYESS4062LY	¤\$	

**EMBRANCHEMENTS** (suite)

(continued) **BRANCHES**



TUBES LATÉRAL PARALLÈLE PARALLEL LATERAL	Aluminium / Aluminum		(11GA - .120")		(16GA - .065)	
	Diam. Ext. (")	Spécifications	Numéro de Cat.	Prix/unité	Numéro de Cat.	Prix/unité
	Outside Diam. (")	Specifications	Catalog Number	Price/unit	Catalog Number	Price/unit
	1.500 ~ 1-1/2	(Spécial/Special)	(Spécial/Special)	⌘\$	(Spécial/Special)	⌘\$
	2.000 ~ 2	(Spécial/Special)	(Spécial/Special)	⌘\$	16A2063060P04	⌘\$
	2.500 ~ 2-1/2	30°, 6CLR, 4.5"C/C	(Spécial/Special)	⌘\$	16A2563060P04 ◀	⌘\$
	3.000 ~ 3	(Spécial/Special)	16A3012120P06	⌘\$	(Spécial/Special)	⌘\$
	4.000 ~ 4	(Spécial/Special)	(Spécial/Special)	⌘\$	(Spécial/Special)	⌘\$
	Acier inoxydable / Stainless Steel		(11GA - .120")		(16GA - .065)	
	1.500 ~ 1-1/2	(Spécial/Special)	(Spécial/Special)	⌘\$	(Spécial/Special)	⌘\$
	2.000 ~ 2	(Spécial/Special)	(Spécial/Special)	⌘\$	(Spécial/Special)	⌘\$
	2.500 ~ 2-1/2	(Spécial/Special)	(Spécial/Special)	⌘\$	(Spécial/Special)	⌘\$
	3.000 ~ 3	(Spécial/Special)	(Spécial/Special)	⌘\$	(Spécial/Special)	⌘\$
4.000 ~ 4	(Spécial/Special)	(Spécial/Special)	⌘\$	(Spécial/Special)	⌘\$	

(Autres diamètres disponibles sur demande / Other sizes available on request)

TUBES TÉ-Y 90° 90° TEE-WYE	Aluminium / Aluminum		(11GA - .120")		(16GA - .065)	
	Diam. Ext. (")	Spécifications	Numéro de Cat.	Prix/unité	Numéro de Cat.	Prix/unité
	Outside Diam. (")	Specifications	Catalog Number	Price/unit	Catalog Number	Price/unit
	1.500 ~ 1-1/2	(Spécial/Special)	(Spécial/Special)	⌘\$	(Spécial/Special)	⌘\$
	2.000 ~ 2	(Spécial/Special)	(Spécial/Special)	⌘\$	(Spécial/Special)	⌘\$
	2.500 ~ 2-1/2	(Spécial/Special)	(Spécial/Special)	⌘\$	(Spécial/Special)	⌘\$
	3.000 ~ 3	(Spécial/Special)	(Spécial/Special)	⌘\$	(Spécial/Special)	⌘\$
	4.000 ~ 4	(Spécial/Special)	(Spécial/Special)	⌘\$	(Spécial/Special)	⌘\$
	Acier inoxydable / Stainless Steel		(11GA - .120")		(16GA - .065)	
	1.500 ~ 1-1/2	(Spécial/Special)	(Spécial/Special)	⌘\$	(Spécial/Special)	⌘\$
	2.000 ~ 2	(Spécial/Special)	(Spécial/Special)	⌘\$	(Spécial/Special)	⌘\$
	2.500 ~ 2-1/2	(Spécial/Special)	(Spécial/Special)	⌘\$	(Spécial/Special)	⌘\$
	3.000 ~ 3	(Spécial/Special)	(Spécial/Special)	⌘\$	(Spécial/Special)	⌘\$
4.000 ~ 4	(Spécial/Special)	(Spécial/Special)	⌘\$	(Spécial/Special)	⌘\$	

(Autres diamètres disponibles sur demande / Other sizes available on request)

Réducteur Excentrique Eccentric Reducer	Coin 90° (2 pièces) 90° (2 pieces) Miter	Coin (3) pièces (3) pc Mitered Bend	Décentré Offset	Coude de bifurcation Bifurcated Bend
Réducteur Concentrique Concentric Reducer	Y Parallèle #1 Parallel Wye #1	Y Parallèle #2 Parallel Wye #2	Y Wye	TY 90° Double Double 90° Tee-Wye